



TRUNKMINDER

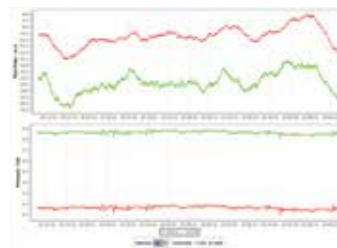


INTELLIGENT PIPELINE MONITORING SYSTEM

Syrinix's TrunkMinder operates at the forefront of intelligent pipeline monitoring technology, using a 4-dimensional sensor array. Permanently attached to larger trunk/bulk water mains, TrunkMinder provides real time operating data and early identification of emerging and emergent leaks that are often the precursor to a catastrophic failure.

Syrinix's TrunkMinder transforms the operating and risk management of critical trunk/bulk water mains.

Data is transferred for conditioning, filtering and interrogation which is undertaken automatically using a stochastic model and bespoke algorithms. This sophisticated model screens out distracting 'false positives' and outputs a high resolution early warning alert. These real time alerts can precisely pinpoint the site of an initial leak along the pipe providing operators with absolute confidence when planning remedial work.



TRUNKMINDER

MAIN BENEFITS

Syrinx's TrunkMinder solution provides the visibility and intelligence needed for effective network operating and risk management, by enabling utilities to:

- Detect/locate incipient leaks on a 24/7 basis whilst avoiding periodic and costly in-pipe surveys
- Understand the future service life of these critical assets which is crucial to the asset planning process
- Be alerted by customisable alerts including SMS and email
- Receive immediate burst alerts
- React to emerging leaks and so move towards 'smart' networks through data capture, interrogation, analysis and reporting
- Avoid false positive alerts and 'dry-digs' through integral certainty assessment
- Risk manage actively, rather than reactively, identifying leaks at the earliest stage
- Lower operating costs

TRUNKMINDER SOLUTIONS OFFER A WIDE RANGE OF FEATURES

- Retains sensitivity on larger diameter pipelines
- Always-on multi-sensor monitoring
- High resolution automated leak detection, locating and notification
- Immediate burst notification
- Web and SCADA accessible feeds
- Configurable graphical presentation of data
- 4-dimensional sensor array and data feed

SYSTEM SPECIFICATION

Sample Rate	1000+ readings per second on all channels Live Pressure Flow uplink at 25 samples per second
Communication	3G or ADSL
Power Source	240V AC 50Hz or 120V AC 60Hz or 12-24V DC
Dimensions	Sensor: 190mm x 220mm (7.4" x 8.6") Control Unit: 300mm x 180mm x 80mm (11.8" x 7.0" x 3.1") ADSL/3G Unit: 300mm x 150mm x 80mm (11.8" x 5.9" x 3.1")
Weight	Sensor: 12kg (26lb 7oz) Control Unit: 3.5kg (7lb 11oz) ADSL/3G unit: 3.5kg (7lb 11oz)
Power Requirements	25W approx. (plus the network interface)
Time Reference	GPS
Environmental Rating	IP68 water ingress protection for sensor array
Operating Environment	-20°C to +45°C (-4°F to +113°F)

TrunkMinder is a permanently installed solution incorporating a 4-dimensional sensor array and data feed, taking critical asset management from reactive to active

For further information please contact info@syrix.com or visit www.syrix.com

Syrinix
Intelligent Pipeline Monitoring